

Stamper

February 2024

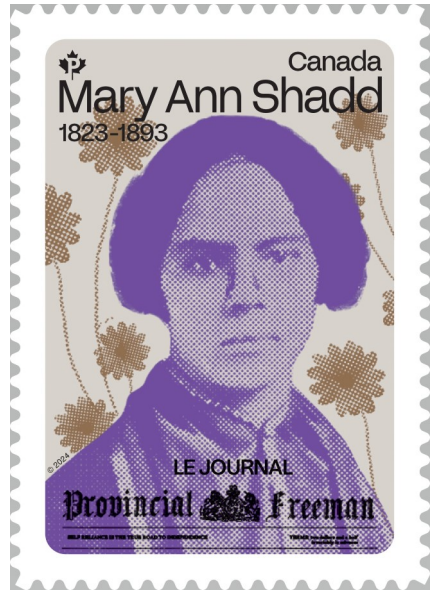
Newsletter from the Lethbridge Philatelic Society

First Stamp for 2024

Part of the Black History Month series, this 2024 stamp pays tribute to Mary Ann Shadd, an abolitionist, educator and lawyer who was the first Black woman to publish a newspaper in North America.

Through her newspaper, the Provincial Freeman, Shadd played an important role in promoting Canada as a place for Black people to settle, raise families and contribute as free citizens.

Ironically looks like a news clipping.



Third of the Time Trip series for Germany



The Brandenburg Gate has been an important symbol of Berlin. It represented a crisis during the years after the war with the DDR and the Berlin wall and Iron Curtain across Germany. The stamp depicts now and then, before the

fall of the Wall. Past two stamps of 22 and 23 below are from the Hochzollner bridge in Cologne and the Frauen Cathedral in Dresden.



The Lethbridge Philatelic Society

The Lethbridge Philatelic Society meets on the 2nd Thursday of the month at 7:00 P.M. (except July and August). Meetings at **Insight**



Insight

#1, 1718-3 Avenue south,
Lethbridge, Alberta

Next Meeting: **February 8, 2024**, in the downstairs conference room.

Website: <https://www.lps57.ca>

Contacts:

President **Darcy Lutz** 403-625-1571

Past President **Kel Hansen** 403-345-6405

Secretary **Tony Pargeter** 403-315-2247

Treasurer **Robert Budd** 403-381-8640

Raffle Secretary **Bob Hlatky** 587-821-5665

Edmonton Books **Walter Kerber** 403-388-9174

Club Books **Andre Vandebek** 403-308-2692

Mailing Address: 196 Heritage Circle West, Lethbridge, AB, T1K 7H8

SAVE WITH CANADA POST: We have a discount # for mailing items at CANADA POST. When mailing tell the clerk it is # 0006050075 the Lethbridge Philatelic Society, Or use my phone # Walter: 403 388 9174



IN MY OPINION

BY WALTER KERBER



Let's talk Postal Stationery

I like Postcards and I like Letters, or Covers. The question is, “What constitutes a Philatelic Item”?. We have seen a lot of postcards with pretty pictures of sorts, but they were not mailed, have no stamp on them, are not related to mail and have no significance in the philatelic world.



Most collectors have FDC's in their collection. The first day of issue of a stamp represented the beginning of a new part of the collection. I remember taking the envelope to the local post office, buying a stamp and mailing it to myself. A week later the envelope showed up in the mailbox, cancelled so heavy that the image was barely visible and slightly crumpled, causing great disappointment. Over the years the Lethbridge club has made several FDC's that were significant with the local area. Today you buy the nice cover with the appropriate motif already cancelled on the date it came out at the outlet, even a year later. The perfect cover. There are many companies from over the world that market covers, but they are usually odd sizes.



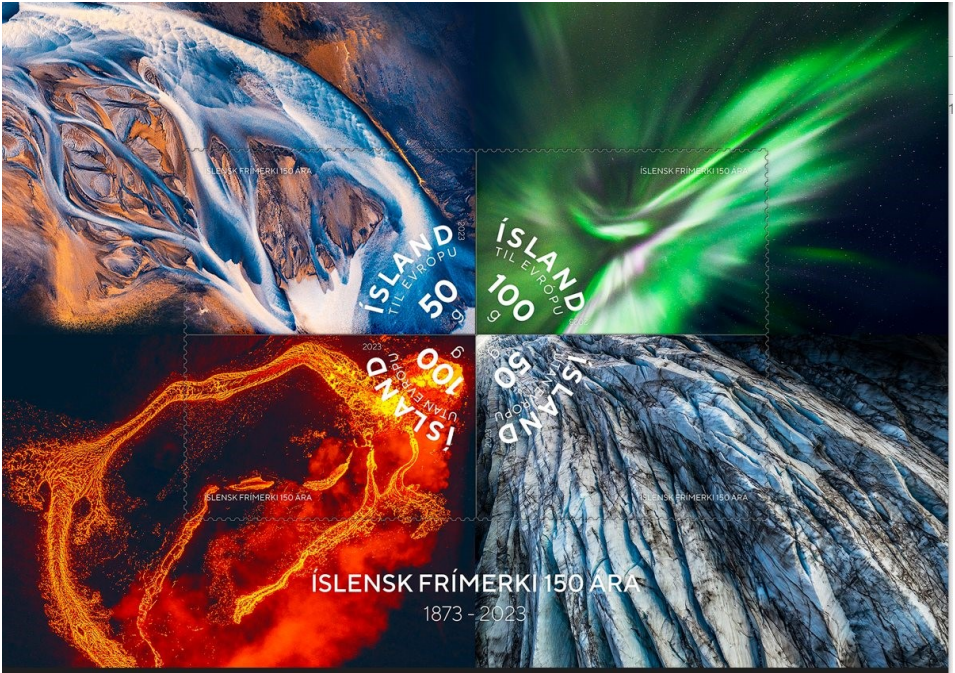
Some countries have FDC's, but they are not necessarily dated correctly. Typically official covers are the rule



The covers I really enjoy in my collection are older, having significance

(Continued on page 6)

Spectacular Surprise



In celebration of the anniversary, the Icelandic postal service issued this beautiful souvenir sheet featuring four stamps, each depicting a unique part of the marvelous Icelandic nature.

If you have been following philatelic news over the years, you might be confused about the issue, as the Icelandic postal service previously announced that they would cease stamp issuance in 2020 - which they also did. So we consider this issue to be an extraordinary issue, and it is yet unknown whether this will be the final issue, or whether there might be more celebratory issues in the future.

No matter whether this was a unique situation or not, there is no debating that this souvenir sheet is visually stunning. The souvenir sheet consists of four stamps, and starting in the top left corner, the first stamp depicts a river flowing through wetlands, highlighting the beautiful elegance and enormous power that water holds.

The top right corner shows the aurora borealis, also known as the northern lights, originating from a single point in the form of an aurora corona. This phe-

(Continued on page 8)

Collecting on a Theme

The "Dornier Wal"

Widely used in the 30's in developing countries with waterways.



(Continued from page 3)

with special or unique stamps. A German cover from 1872, with writing I can't read is interesting. There are the letters addressed to a Mr. Parish, from milling manufacturers and grain suppliers, obviously before the establishment of



Typical post WW2 East German cover for collector w/ variety

Parish and Heimbecker. When items show historical or interesting events, they become items of philately, having a theme.

Likewise are the postcards from the 1800's that show bills for payment or notes from loved ones, or from the Goddard Pass in Switzerland, with the early railroad snaking to the top, postmarked in those days. Germany had a lot of millennium 1900 cards that people mailed. None of these cards had a picture on them. The card was addressed on one side and the message was on the other.

That is what I call postal Stationery. Even the cards that Canada Post brought out in the 70's and 80's, with identical stamps on them were no more than a gimmick that didn't last long with collectors. So what is a postcard with a picture and no stamp? Nothing.



BELGIUM 2024



Motorcycles of Belgium are showcased



Bandstands of Belgium



The ART of Belgium Glass



Announcements

● Next Meetings :

● February 8, 2024

● March 14, 2024

(Continued from page 4)

nomenon shows us the wonders of space, and how the atmosphere interacts with the solar wind. It can really make you feel small.

The bottom left corner is quite dramatic, as the stamp depicts the crater and lava flow from one of the many volcanoes in Iceland. An image like this really shows what nature is capable of, as we are in many ways helpless when it comes to countering the effects of volcanic eruptions. The potential unstoppable force of destruction is a source of wonder for many of us.

The final stamp at the bottom right corner depicts another force of nature. The stamp depicts the Svinafellsjökull glacier, which is the largest ice cap in Europe, but that is not its only feature. The glacier is known for its rugged appearance, with numerous sharp ridges that are impossible to climb, which makes it stand out from the other glaciers in Iceland. The glacier has an agelessness to it, that is hard to find elsewhere.

Classifieds:

Classifieds are free, one per month per member E-mail yours

to : kerber1227@gmail.com by month end.

What ??????????

NEW ADS HERE?

Nations Stamp Websites

Canada: Latest stamps | New in store | Canada Post

England: <http://www.collectgbstamps.co.uk/default.asp>

Germany: Neuerscheinungen | Shop Deutsche Post

Austrian: Philately news 2021 - PostAG

Denmark: Frimærker

STAMP Pages : <http://tim.mond.free.fr/>

Poland: Poczta Polska Philatelic Shop - Welcome

USA: <https://store.usps.com/store> - go to "postal store"

Edmonton: <http://www.edmontonstampclub.com/Newsletter.html>

Calgary Philatelic Society – The Calgary Philatelic Society

Stamp Collecting World: <https://www.stamp-collecting-world.com/>